

Hakushika  
Snow Beauty

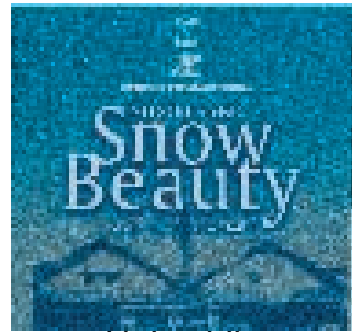
*Rough filtered 'Nigori Sake'  
has pure original rice flavor  
with a mellow finish.*

*Nihonshu-Do Rating: -13*

*Optimal Temperature: 35° - 45° F*

[www.angeliniwine.com](http://www.angeliniwine.com)

ANGELINI  
SELECTION



Hakushika  
Snow Beauty

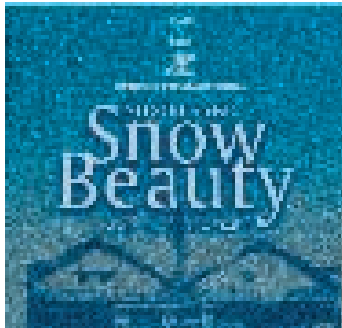
*Rough filtered 'Nigori Sake'  
has pure original rice flavor  
with a mellow finish.*

*Nihonshu-Do Rating: -13*

*Optimal Temperature: 35° - 45° F*

[www.angeliniwine.com](http://www.angeliniwine.com)

ANGELINI  
SELECTION



Hakushika  
Snow Beauty

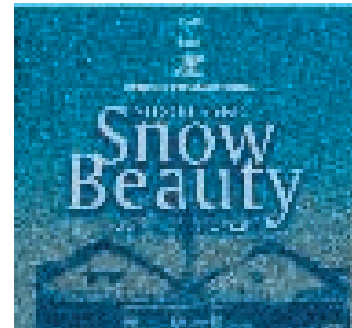
*Rough filtered 'Nigori Sake'  
has pure original rice flavor  
with a mellow finish.*

*Nihonshu-Do Rating: -13*

*Optimal Temperature: 35° - 45° F*

[www.angeliniwine.com](http://www.angeliniwine.com)

ANGELINI  
SELECTION



Hakushika  
Snow Beauty

*Rough filtered 'Nigori Sake'  
has pure original rice flavor  
with a mellow finish.*

*Nihonshu-Do Rating: -13*

*Optimal Temperature: 35° - 45° F*

[www.angeliniwine.com](http://www.angeliniwine.com)

ANGELINI  
SELECTION