



Beautiful bright lilac color, with aromas of fresh plum fruit and light white pepper tones. On the palate, hints of blueberry and peach with soft/round tannins. Ideal with pasta in red sauces, all meat dishes and cheeses.



**ANGELINI**  
SELECTION  
www.angeliniwine.com



Beautiful bright lilac color, with aromas of fresh plum fruit and light white pepper tones. On the palate, hints of blueberry and peach with soft/round tannins. Ideal with pasta in red sauces, all meat dishes and cheeses.



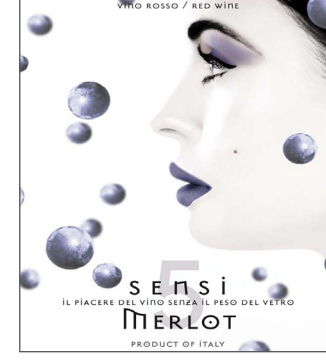
**ANGELINI**  
SELECTION  
www.angeliniwine.com



Beautiful bright lilac color, with aromas of fresh plum fruit and light white pepper tones. On the palate, hints of blueberry and peach with soft/round tannins. Ideal with pasta in red sauces, all meat dishes and cheeses.



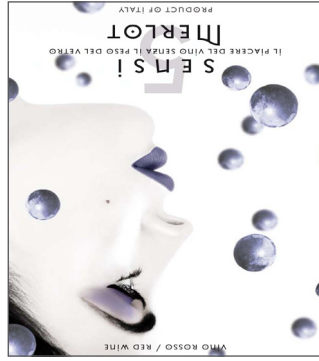
**ANGELINI**  
SELECTION  
www.angeliniwine.com



Beautiful bright lilac color, with aromas of fresh plum fruit and light white pepper tones. On the palate, hints of blueberry and peach with soft/round tannins. Ideal with pasta in red sauces, all meat dishes and cheeses.



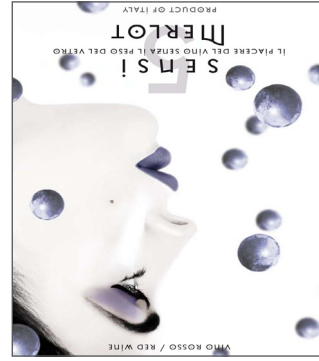
**ANGELINI**  
SELECTION  
www.angeliniwine.com



Beautiful bright lilac color, with aromas of fresh plum fruit and light white pepper tones. On the palate, hints of blueberry and peach with soft/round tannins. Ideal with pasta in red sauces, all meat dishes and cheeses.



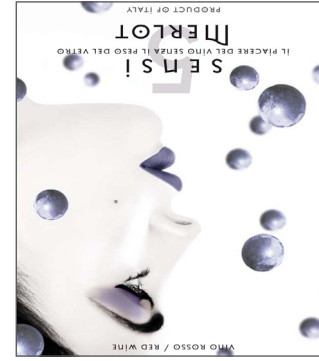
**ANGELINI**  
SELECTION  
www.angeliniwine.com



Beautiful bright lilac color, with aromas of fresh plum fruit and light white pepper tones. On the palate, hints of blueberry and peach with soft/round tannins. Ideal with pasta in red sauces, all meat dishes and cheeses.



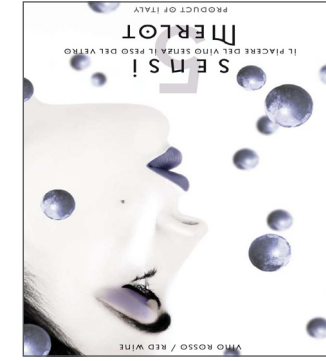
**ANGELINI**  
SELECTION  
www.angeliniwine.com



Beautiful bright lilac color, with aromas of fresh plum fruit and light white pepper tones. On the palate, hints of blueberry and peach with soft/round tannins. Ideal with pasta in red sauces, all meat dishes and cheeses.



**ANGELINI**  
SELECTION  
www.angeliniwine.com



Beautiful bright lilac color, with aromas of fresh plum fruit and light white pepper tones. On the palate, hints of blueberry and peach with soft/round tannins. Ideal with pasta in red sauces, all meat dishes and cheeses.



**ANGELINI**  
SELECTION  
www.angeliniwine.com